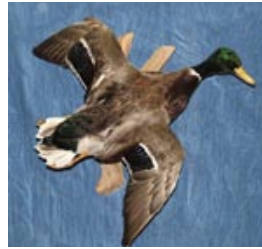
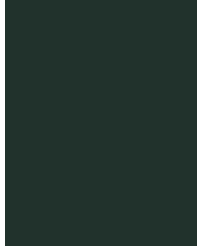


Taxidermy

Taxidermy is a general term describing the many methods of reproducing a life-like threedimensional representation of an animal.



The word "taxidermy" is derived from two ancient Greek words; taxis, meaning movement; and derma, meaning skin. Therefore, loosely translated, taxidermy means the movement of skin.

In a modern mount, for example, the only natural parts of the animal used are the antlers and the skin. All of the other organs and tissues are recreated with man-made materials. The eyes are made from glass, the eyelids are sculpted from clay, the soft tissues of the nose and mouth are sculpted from epoxy or wax, and the mannikin or "form" (which incorporates the anatomy of each muscle and vein) is made from polyurethane foam.



There are 2 versions of taxidermy foam supplied by Era Polymers:

- Erathane TX56 produces foam with a free rise density of 56 kg/m³.
- Erathane TX56 FR produces foam with a free rise density of 56 kg/m³ with fire-retardant properties.

Era Polymers taxidermy foam has several advantages including:

- User Friendly
- Quick and easy mould pouring
- Cost effective

For more information about this product please contact our sales team or visit our website at www.erapol.com.au

Era Polymers Pty. Ltd.

25-27 Green St, Banksmeadow, NSW 2019, AUSTRALIA

T: (02) 9666 3788 | F: (02) 9666 4805 | W: www.erapol.com.au

